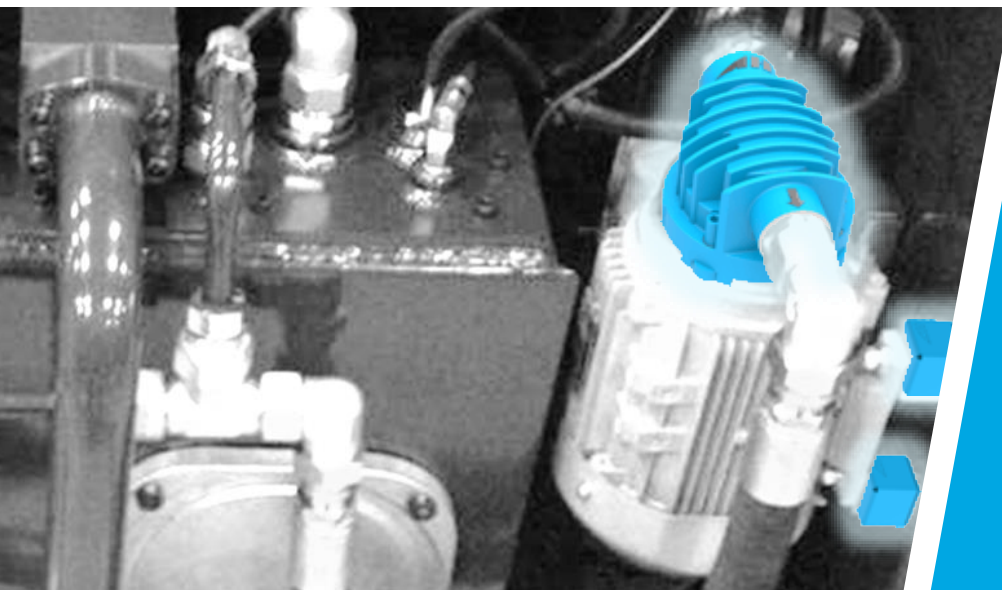




# Fluid Controls

## Gerotor Pump Generation 2



be different.  
make a difference.

# Fluid Controls

## Gerotor Pump Generation 2



### Design

The GERO generation 2 gerotor pumps are constant displacement pumps with compact measurements, high cleanness and a robust attribute. The asa gerotor pump generation 2 is a completely new design with trend setting modules to serve for highest flexibility to the actual application, while using the advantages of a standard product at the same time.

### Applications

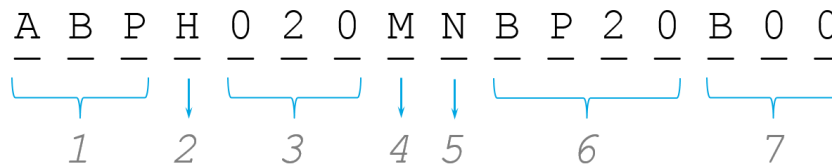
The aluminium body of the housing, the steel shaft and the standard NBR sealings are the perfect match for any mineral oil application. The pump is recommended for lubrication circuits as well as for oil supply, cooling and filtration systems.

### Advantages

- Modular design**  
 Our pump design use the same housing from smallest to largest application. This results in high reliability and most economic approach in the markets.
- Cleanness**  
 One of the most sophisticated topics and requirements on a modern hydraulic component is the cleanness. This is therefore the indicator for the ability to save costs and labour time for the designer and the complete system. We are working to the highest standards beyond the usual requirements.
- Internal bypass**  
 The internal bypass is a standard option and keeps the same overall measurements.
- asa rail system**  
 The asa rail system an additional option to the conventional SAE 1 ¼" connection on the outlet. The system requires separate connectors which can be turned in 4 different directions and offers an additional G ½" port for any monitoring or other purpose.



### Pump Order Code



#### 1 Product Category

ABP	Pumps
-----	-------

#### 2 Product Series

H	Gerotor Generation 2 for hydraulic use
---	--

#### 3 Pump Displacement

nominal	Displ./rotation
20	21,6 cm <sup>3</sup>
30	34,2 cm <sup>3</sup>
40	41,4 cm <sup>3</sup>
60	61,3 cm <sup>3</sup>
80	81 cm <sup>3</sup>

#### 4 Type of Connection

M	metric 4-hole / ISO 3019-2
Z	SAE B-B 4- hole / SAE J744

#### 5 Sealing Material

N	NBR
---	-----

#### 6 Internal Bypass

BP20	2 bar relief pressure
BP60	6 bar relief pressure
BP99	10 bar relief pressure (standard)

#### 7 Index / Customized

B00	special / customized specifications; to be advised by asa
-----	---

### General Data

max. negative inlet pressure:	-0,5 bar to 0 bar
max. outlet pressure:	10 bar (relative)
max. kinematic viscosity:	up to 500 mm <sup>2</sup> /s *)
oil temperature range	-20°C to +80°C
ambient working temperature range	-20°C to +80°C**)
compatible media	any mineral oil acc. DIN 51524

### Materials

housing and cover	aluminium
shaft	steel
gerotor	steel
sealings	NBR
centering disc	aluminium

\*) depending on motor power

\*\*) ...consider the maximum ambient temperature of the used electric motor

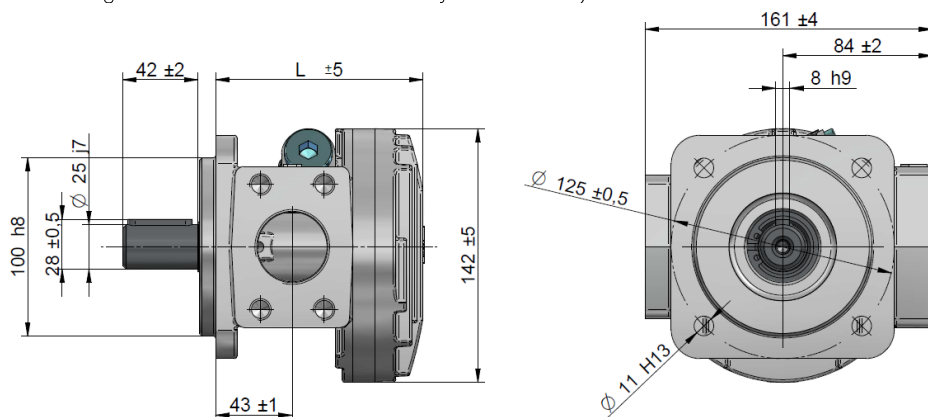
# Fluid Controls

## Gerotor Pump Generation 2



### Metric version

(4-hole flange acc. ISO 3019-2 100B4HW with cylindrical shaft)

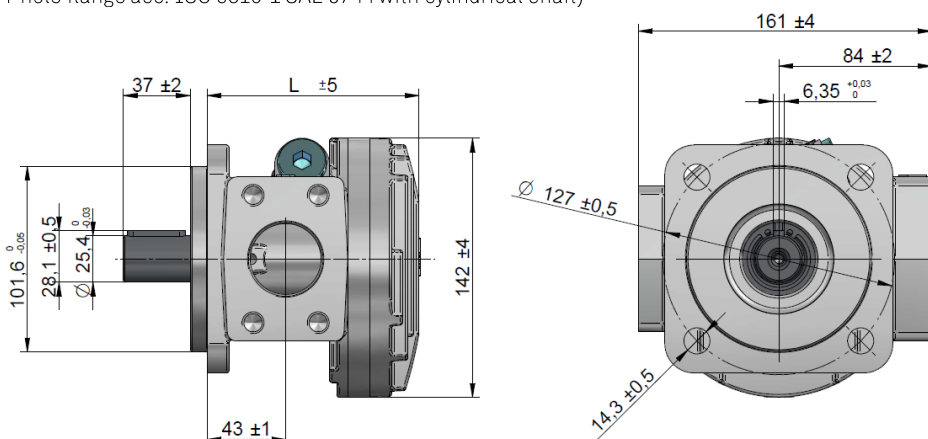


### Dimensions

Normal size	L [mm]
20	117
30	124
40	128
60	139
80	150

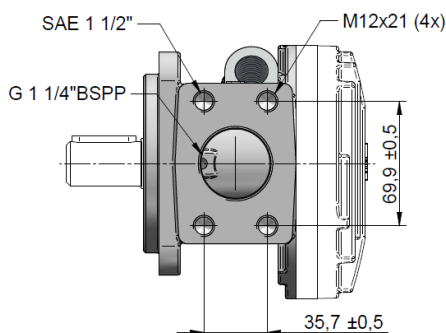
### SAE version

(4-hole flange acc. ISO 3019-1 SAE J744 with cylindrical shaft)

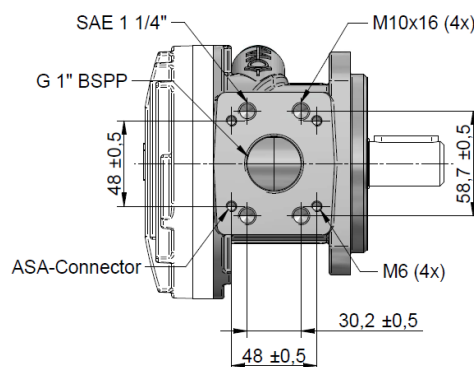


### Hydraulic connection

#### Inlet Port



#### Outlet Port



### Specific Data

order number	description	displacement [cm <sup>3</sup> /rotation]	oil flow <sup>1)</sup> [l/min]	min. required motor power <sup>2)</sup> [kW]	weight [kg]
ABPH020MNBP20	Gerotor pump 2, 20cm <sup>3</sup> / metric	21,6	28	1,1	4,9
ABPH030MNBP20	Gerotor pump 2, 30cm <sup>3</sup> / metric	34,2	44	1,1	5,4
ABPH040MNBP20	Gerotor pump 2, 40cm <sup>3</sup> / metric	41,4	54	1,5	6,1
ABPH060MNBP20	Gerotor pump 2, 60cm <sup>3</sup> / metric	61,3	80	1,5	7,2
ABPH080MNBP20	Gerotor pump 2, 80cm <sup>3</sup> / metric	81	105	1,5	8,4

<sup>1)</sup>...measured at rotation of 1450rpm, pressure 0,5bar and viscosity of 46mm<sup>2</sup>/s / for 60Hz oil flow values to be multiplied by 1,2

<sup>2)</sup>...check page 6 for max.pressure and viscosity

# Fluid Controls

## Gerotor Pump Generation 2

### Motor / Pump Unit

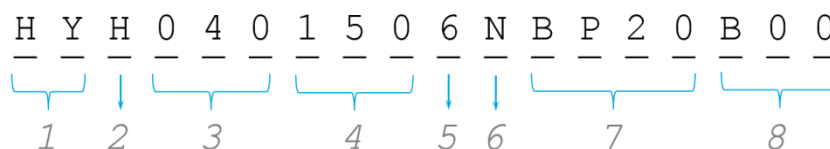


Our motor / pump units are a simplified option for you to the best practice configuration with highest versatility to the possible applications. It consists of a configured gerotor pump, bell housing and electric motor. The high quality components are in line with the pump concept. The motor/pump unit can be used as autonomous circulation power pack.

Saving space and highest cost efficiency are the most important characteristics for the available configurations.

Contact us in case of questions and for any special requirements, so we can offer our support to select the optimal product.

## Pump Order Code



### 1 Product Category

HY	motor/pump unit
----	-----------------

### 2 Product Series

H	gerotor generation 2 for hydraulic use
---	--

### 3 Pump Displacement

nominal	Displ./rotation
20	21,6 cm <sup>3</sup>
30	34,2 cm <sup>3</sup>
40	41,4 cm <sup>3</sup>
60	61,3 cm <sup>3</sup>
80	81 cm <sup>3</sup>

### 4 Motor power

110	1,10 kW
150	1,50 kW
220	2,20 kW
300	3,00 kW
400	4,00 kW

### 5 No. of Poles

4	4-pole motor
6	6-pole motor

### 6 Sealing Material

N	NBR
---	-----

### 7 Internal Bypass

BP20	2 bar relief pressure
BP60	6 bar relief pressure
BP99	10 bar relief pressure (standard)

### 8 Index / Customized

B00	special / customized specifications; to be advised by asa
-----	---

## General Data

frequency	50Hz
voltage	230/400V
protection	IP 55
efficiency electric motor	IE3

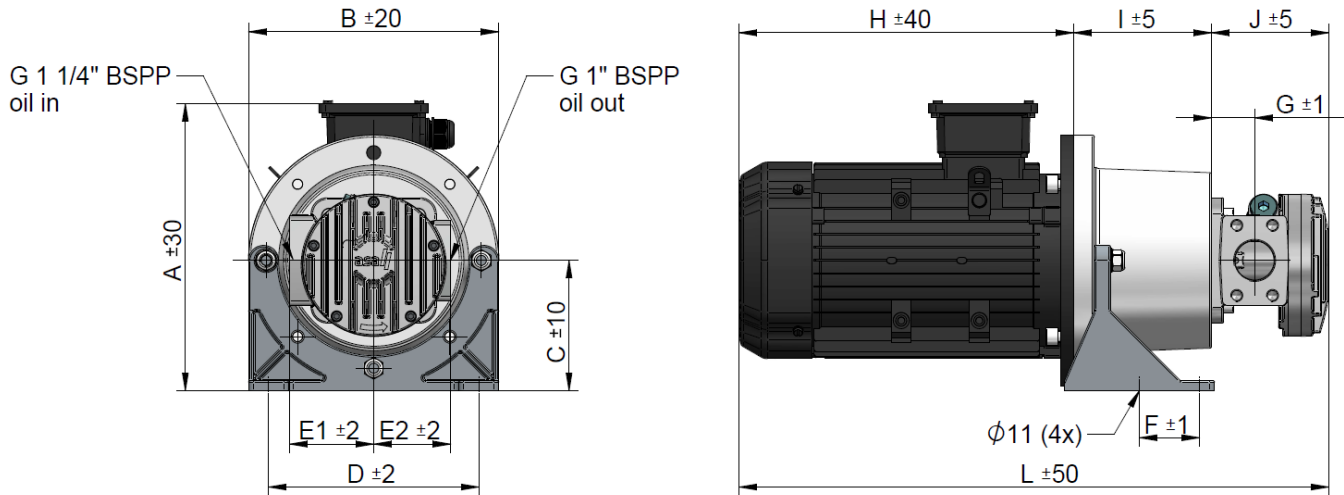
## Materials

pump	aluminium
flexible coupling	aluminium/polyurethan
bell housing	aluminium
feet	aluminium

## Working Range

ambient temperature	-15°C to +40°C
suction side	-0,5 to 0 bar
max. oil temperature	80°C
fluids	mineral oil acc .DIN51524





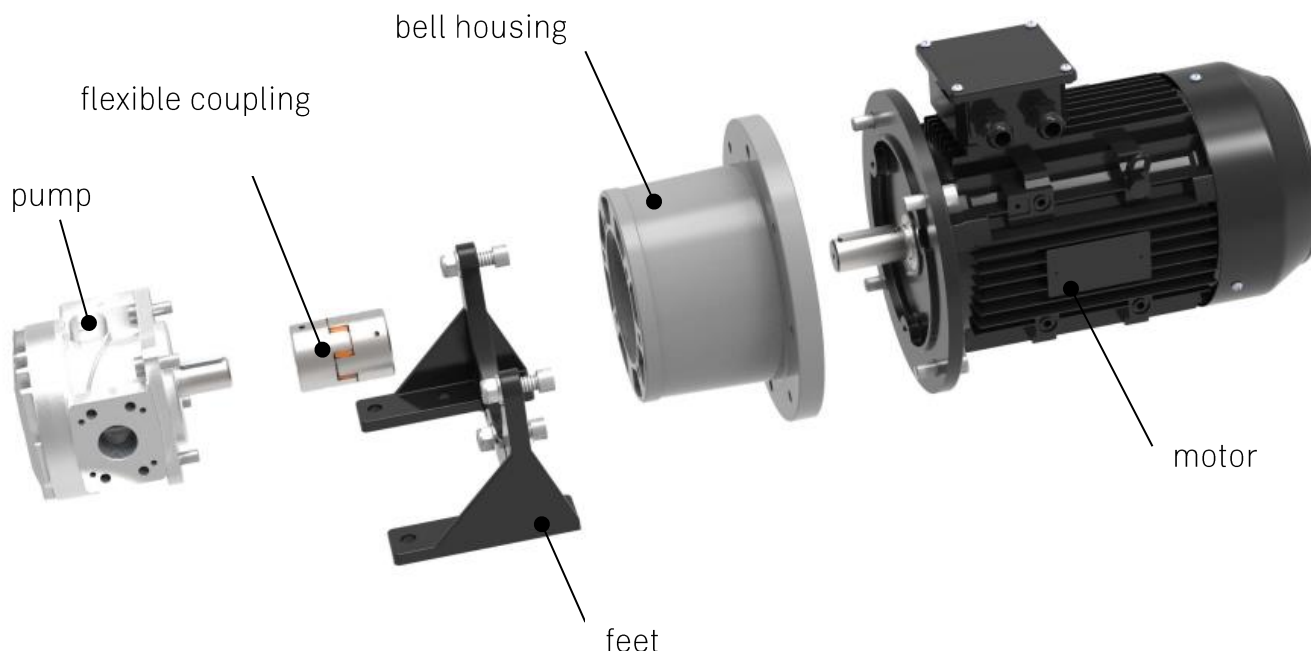
### Dimensions

order number	A	B	C	D	E1	E2	F	G	H	I	J	L	weight
	[mm]	[mm]	[mm]	[mm]	[mm]	[mm]	[mm]	[mm]	[mm]	[mm]	[mm]	[mm]	[kg]
HYH0201106NBP99	250	200	112	180	84	77	60	43	265	126	117	490	27
HYH0201506NBP99	286	250	130	220	84	77	60	43	314	136	117	570	38
HYH0201504NBP99	250	200	112	180	84	77	60	43	290	126	117	513	27
HYH0202204NBP99	286	250	130	220	84	77	60	43	314	136	117	570	35
HYH0301106NBP99	250	200	112	180	84	77	60	43	290	126	124	495	26
HYH0301506NBP99	286	250	130	220	84	77	60	43	314	136	124	575	38
HYH0301504NBP99	250	200	112	180	84	77	60	43	290	126	124	518	27
HYH0302204NBP99	286	250	130	220	84	77	60	43	314	136	124	575	34
HYH0401506NBP99	286	250	130	220	84	77	60	43	314	136	128	580	39
HYH0402204NBP99	286	250	130	220	84	77	60	43	314	136	128	580	35
HYH0403004NBP99	286	250	130	220	84	77	60	43	314	136	128	580	40
HYH0601506NBP99	286	250	130	220	84	77	60	43	314	136	139	590	40
HYH0602206NBP99	304	250	130	220	84	77	60	43	335	136	139	610	43
HYH0602204NBP99	286	250	130	220	84	77	60	43	314	136	139	590	36
HYH0603004NBP99	286	250	130	220	84	77	60	43	314	136	139	590	41
HYH0604004NBP99	304	250	130	220	84	77	60	43	335	136	139	610	49
HYH0801506NBP99	286	250	130	220	84	77	60	43	314	136	150	600	42
HYH0802206NBP99	304	250	130	220	84	77	60	43	335	136	150	620	45
HYH0802204NBP99	286	250	130	220	84	77	60	43	314	136	150	600	43
HYH0803004NBP99	286	250	130	220	84	77	60	43	314	136	150	600	43

### Technical Data

order number	description	motor power	motor size	poles	oil flow	max. pressure	max. viscosity	noise level *)
		[kW]	IEC		[lpm]	[bar]	[cSt]	[dB(A)]
HYH0201106NBP99	Gero pump unit 50Hz 20cm <sup>3</sup> 1,1kW 6-pol. BP	1,10	90L	6	18	8	150	62
HYH0201506NBP99	Gero pump unit 50Hz 20cm <sup>3</sup> 1,5kW 6-pol. BP	1,50	100L	6	18	8	250	62
HYH0201504NBP99	Gero pump unit 50Hz 20cm <sup>3</sup> 1,5kW 4-pol. BP	1,50	90L	4	28	10	250	62
HYH0202204NBP99	Gero pump unit 50Hz 20cm <sup>3</sup> 2,2kW 4-pol. BP	2,20	100L	4	28	10	500	62
HYH0301106NBP99	Gero pump unit 50Hz 30cm <sup>3</sup> 1,1kW 6-pol. BP	1,10	90L	6	29	8	150	64
HYH0301506NBP99	Gero pump unit 50Hz 30cm <sup>3</sup> 1,5kW 6-pol. BP	1,50	100L	6	29	8	250	64
HYH0301504NBP99	Gero pump unit 50Hz 30cm <sup>3</sup> 1,5kW 4-pol. BP	1,50	90L	4	44	10	250	64
HYH0302204NBP99	Gero pump unit 50Hz 30cm <sup>3</sup> 2,2kW 4-pol. BP	2,20	100L	4	44	10	500	64
HYH0401506NBP99	Gero pump unit 50Hz 40cm <sup>3</sup> 1,5kW 6-pol. BP	1,50	100L	6	35	8	250	66
HYH0402204NBP99	Gero pump unit 50Hz 40cm <sup>3</sup> 2,2kW 4-pol. BP	2,20	100L	4	54	10	250	66
HYH0403004NBP99	Gero pump unit 50Hz 40cm <sup>3</sup> 3,0kW 4-pol. BP	3,00	100L	4	54	10	500	66
HYH0601506NBP99	Gero pump unit 50Hz 60cm <sup>3</sup> 1,5kW 6-pol. BP	1,50	100L	6	52	8	250	68
HYH0602206NBP99	Gero pump unit 50Hz 60cm <sup>3</sup> 2,2kW 6-pol. BP	2,20	112M	6	52	8	250	68
HYH0602204NBP99	Gero pump unit 50Hz 60cm <sup>3</sup> 2,2kW 4-pol. BP	2,20	100L	4	80	10	150	68
HYH0603004NBP99	Gero pump unit 50Hz 60cm <sup>3</sup> 3,0kW 4-pol. BP	3,00	100L	4	80	10	250	68
HYH0604004NBP99	Gero pump unit 50Hz 60cm <sup>3</sup> 4,0kW 4-pol. BP	4,00	112M	4	80	10	500	68
HYH0801506NBP99	Gero pump unit 50Hz 80cm <sup>3</sup> 1,5kW 6-pol. BP	1,50	100L	6	69	8	150	69
HYH0802206NBP99	Gero pump unit 50Hz 80cm <sup>3</sup> 2,2kW 6-pol. BP	2,20	112M	6	69	8	250	69
HYH0802204NBP99	Gero pump unit 50Hz 80cm <sup>3</sup> 2,2kW 4-pol. BP	2,20	100L	4	105	10	250	69
HYH0803004NBP99	Gero pump unit 50Hz 80cm <sup>3</sup> 3,0kW 4-pol. BP	3,00	100L	4	105	10	500	69

\*)depending on motor



### Options

#### Filtration

We offer an optional spin on filter kit to mount on the outlet port in combination with our hydraulic rail connection system, see below.

spin on filter kit BSP ¾"	ILLZRF11G2010	(10µm, 60lpm)
	ILLZRF11G2025	(25µm, 60lpm)
	ILLZRF12G2010	(10µm, 100lpm)
	ILLZRF12G2025	(25µm, 100lpm)
clogging indicator	electric, optical	
temperature switches	ILLZTH5069K, ILLZTH4765K	
	ILLZTH6065K	

Contact us for complete data sheet of this filter integration system.



#### Hydraulic connection

For the suction side, you can choose from our connection technology program a flexible rubber compensator with SAE flanges. For the outlet port you can choose any of our rail connectors, with the possibility to turn the port direction at the below given dimensions.

<b>Inlet Port</b>		
SAE rubber compensator NBR/CR, NG 40, SAE 1 ½"		
order number:	SDKSS040	
<b>Outlet Port</b>		
optional rail connector order numbers		
90° rail connector BSP 1"	ILLZATT53G25	
straight rail connector BSP 1"	ILLZATTS1G25	
1"		
90° rail connector BSP 1 ¼"	ILLZATT53G32	

Contact us for our complete suction line product program, including adapter flanges and butterfly valves.

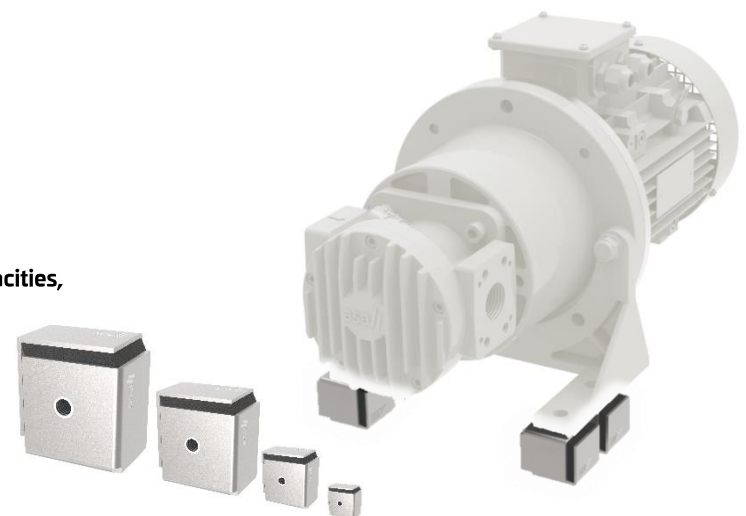


#### Vibration Absorbers

Using our patented vibration absorbers extends the duration of the pump unit. The unique design has highest capabilities with higher vulcanization surface than conventional products. The shear load capabilities can be maximized by the given arrow system on the product.

50x50x45mm absorber with M10 threads	Extended duration and highest shear loads through our design and arrows system on the product.
order number	MDGQ504510IIK
50x50x45 M10	

Contact us for full vibration absorber program with load capacities, maximum static loads and spring rates.



**be different.  
make a difference.**



#### **AUSTRIA**

asa technology GmbH  
Prager Strasse 280  
A-1210, Vienna  
Tel.: +43 1 292 40 20  
support@asahydraulik.com

#### **USA**

asa hydraulik of America  
160 Meister Avenue 20 A  
Branchburg, New Jersey 08876  
Tel.: +1 800 473 94 00  
Tel.: +1 908 541 15 00  
sales\_us@asahydraulik.com

#### **CHINA**

安飒液压科技（苏州）有限公司  
asa Hydraulik Technology (Suzhou) Co.Ltd  
江苏省苏州市工业园区方洲路128号6区B幢  
Area 6, Building B,  
Fangzhou Road No 128,  
Suzhou industrial park,  
Suzhou City, Jiangsu Province  
Tel.: +86 512 62381988  
suzhou@asahydraulik.com

#### **AUSTRALIA**

asa Products Pty Ltd  
Bentley Street 4/15  
3016 Williamstown, Victoria  
Tel.: +61 3 9397 6129  
melbourne@asahydraulik.com

#### **INDIA**

ASA hydraulik India Pvt Ltd  
C1/102/9, GIDC, Palej, Dt.Bharuch  
Gujarat - 392220  
Tel.: +91 22 28195557  
salesindia@asahydraulik.com